



COMBERTON SIXTH FORM

ADMISSIONS 2024



www.combertonsixthform.org



@CombertonSF

THE CURRICULUM



SUBJECT CHOICES



A-LEVELS

Art & Design
Biology
Business
Chemistry
Computer Science
Double Maths
Drama & Theatre Studies
Economics
English Language
English Literature
Environmental Science
Film Studies
French
Further Mathematics
Geography
German
Graphic Communication
History
Mandarin
Mathematics
Music
Music Technology
Photography
Physical Education
Physics
Politics
Psychology

Religious Studies
(Philosophy and Ethics)
Sociology
Spanish

BTEC NATIONAL LEVEL

3 COURSES IN:

Business
Health & Social Care
Science
Sport

ADDITIONAL QUALIFICATIONS

Cambridge IPQ
Extended Project (EPQ)
Core Mathematics
STEP
AEA Mathematics

New for 2024:
Environmental
Science

A-Level or BTEC courses will sit at the heart of any study programme, which can then be enhanced by a range of additional courses and activities.

Our additional qualifications are designed to meet individual needs and provide opportunities for academic challenge, breadth of study and personal development.

Students can also benefit from starting four A-levels with us, either with the intention of doing so long term, or to aid making subject choices in the first half term.



YOUR PROGRAMME OF STUDY

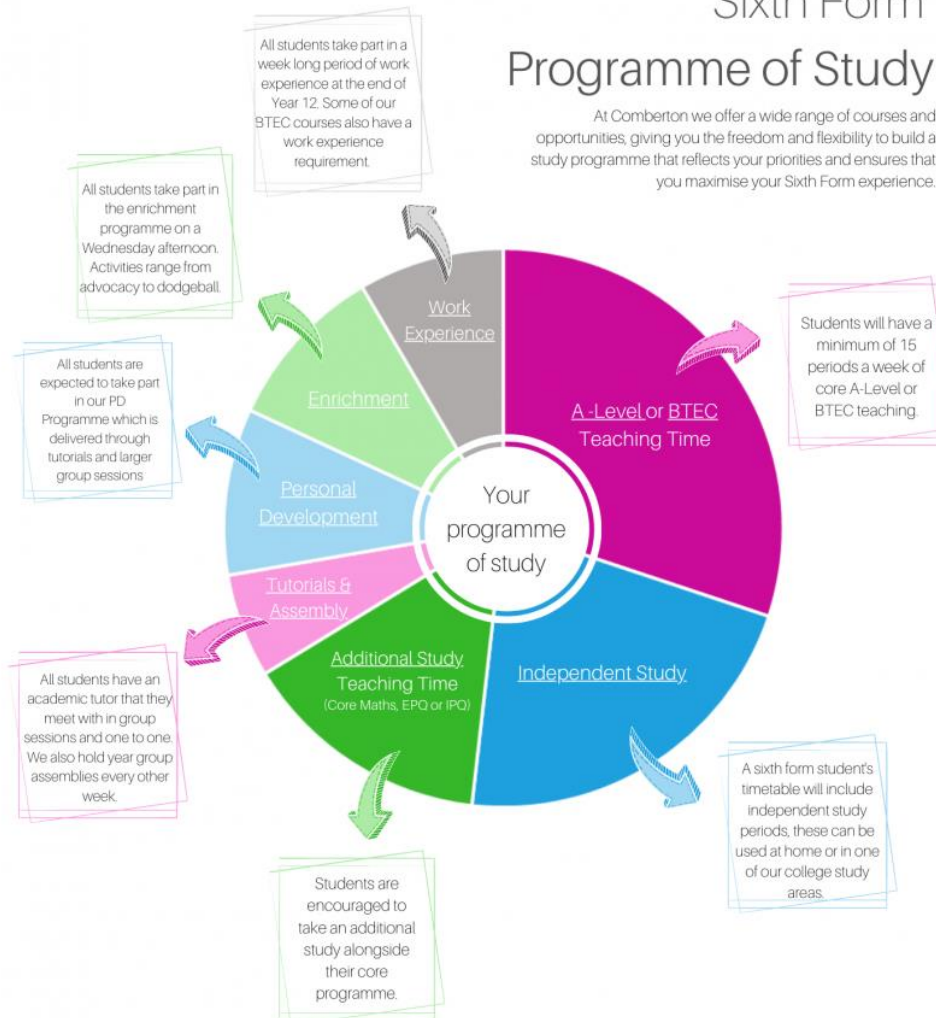
We offer a wide range of courses and opportunities, giving students the freedom and flexibility to build an individualised study programme.

Programmes of study will reflect individual priorities and ensures that students maximise their sixth form experience and realise their ambitions.

All our students have timetabled enrichment options and complete WEX

Sixth Form Programme of Study

At Comberton we offer a wide range of courses and opportunities, giving you the freedom and flexibility to build a study programme that reflects your priorities and ensures that you maximise your Sixth Form experience.

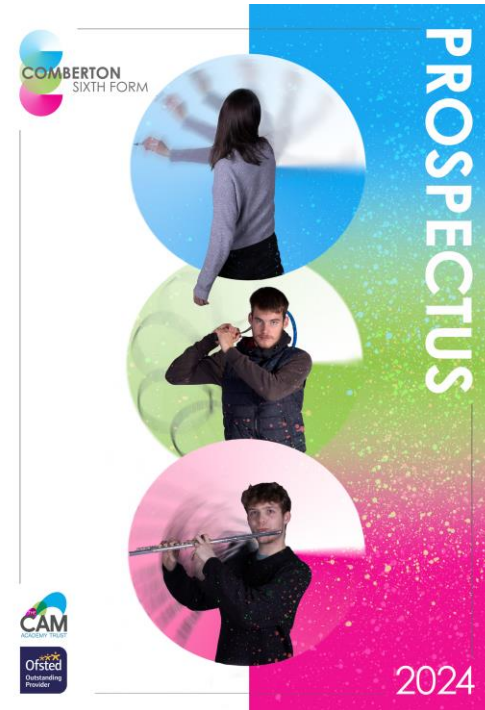


ENTRY REQUIREMENTS

Our Sixth Form provides appropriate courses and routes for committed students seeking to engage in higher-level study.

A-LEVEL	BTEC	IPQ
<p>A minimum of 5 grade 5s at GCSE</p> <p>Minimum of grade 4 in Maths and English</p> <p>Minimum of a 6 in subjects to be studied at A-Level*</p> <p>Please note that Level 2 vocational courses are the equivalent of one GCSE and only one at Merit or Distinction will be considered</p>	<p>A minimum of 5 grade 4s at GCSE, including Maths and English Language</p> <p>If a Level 2 vocational qualification forms part of the offer a Pass, Merit or Distinction will be required</p>	<p>A minimum of 5 grade 7s at GCSE</p>

* A number of courses have additional entry requirements. Please check the subject pages for further information



GUIDANCE Meetings

We will offer a guidance meeting to **all appropriate first and second choice applicants** who meet our admission criteria.

SUPPORT

Academic

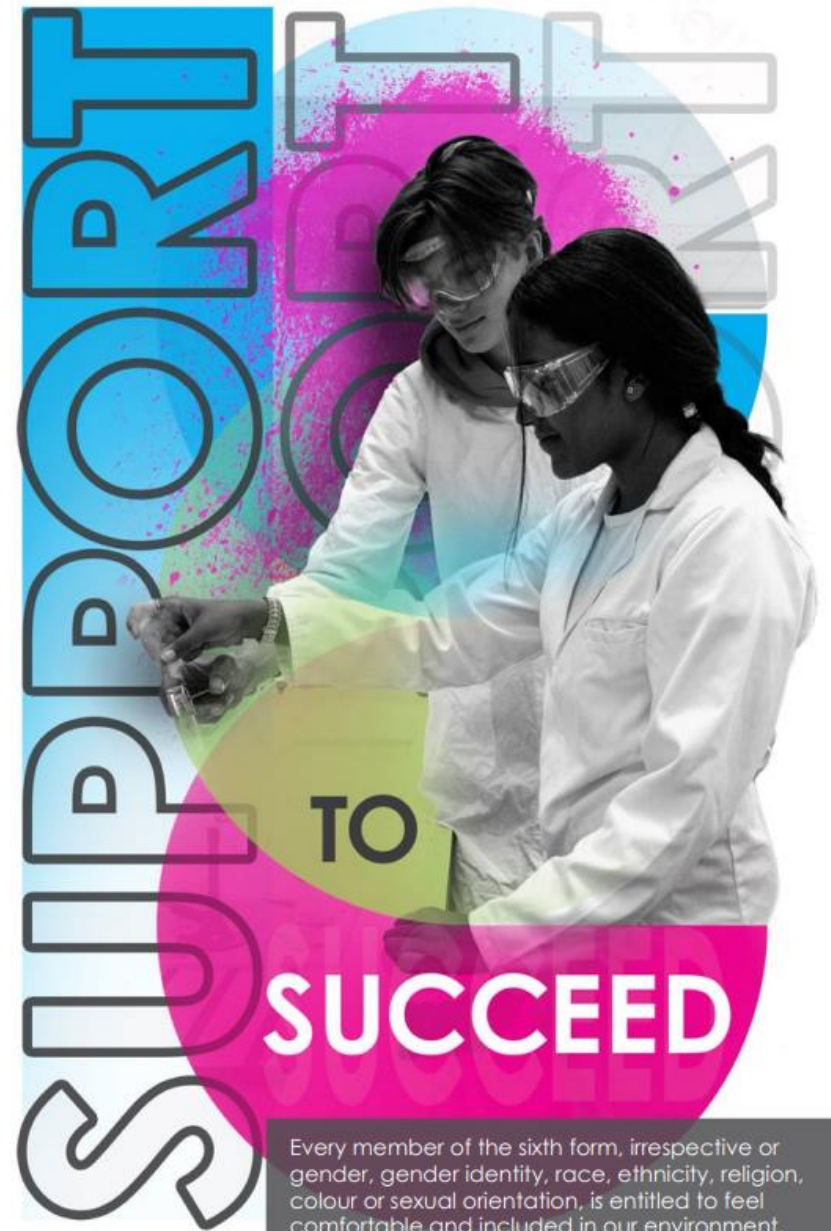
- Specialist staff
- Subject Leads

Pastoral and Well-being

- Tutors
- Support Team
- Counsellor
- Safeguarding

Post-18 pathways

Financial/bursary



POST-18 PATHWAYS



Applying to competitive universities and highly selective courses

Oxbridge Veterinary science Medicine

Early identification
One-to-one guidance
Additional opportunities: Villiers Park, master classes, summer schools, work experience

UCAS

One-to-one guidance
University visits
UCAS information evening
Personal statement drop-in sessions
Mock interviews
Post results advice

Apprenticeships, employment and school leaver programmes

One-to-one guidance
CV writing support
Mock interviews

INSPIRATION

INSPIRATION
INSPIRATION

TO
GROW

COMBERTON SIXTH FORM

TRIPS AND ENRICHMENT



Ski Trip



Geography Field Trip



Charity Enrichment Group



Advocacy Enrichment



Indoor Football



Music Enrichment



Grease Theatre Trip



Oxford University Trip



Sports Leaders at Meridian Primary School



Theatre Production Enrichment

ADDITIONAL OPPORTUNITIES



TRANSPORT

We offer a number of directly commissioned bus services to help young people travel to and from CSF.

In 2024, we are running six separate routes.

In addition, the Whippet, No18 service travels to and from Cambridge to Cambourne via other villages and this stops outside the college*.

**we are no longer offering our Cambourne service as the Whippet No18 has a new timetable to reflect our college day and our Trust is opening new Post-16 provision in the form of Cambourne Sixth Form.*

HOW TO GET TO US

In order to ensure students can travel to Camberton Sixth Form we operate bus routes covering the following areas:

BAR HILL

Bar Hill, Oakington, Girtton, Dry Drayton, Hardwick

GRANSDEN

Wareley, Great Gransden, Longstowe

MELBOURN

Melbourn, Meldreth, Shepreth, Foxton, Haulon, Harston, Haslingfield, Barnington, Orwell

SWAVESEY

Langstanton, Northstowe, Over, Swavesey, Fenstanton, Hilton, Papworth, Hardwick

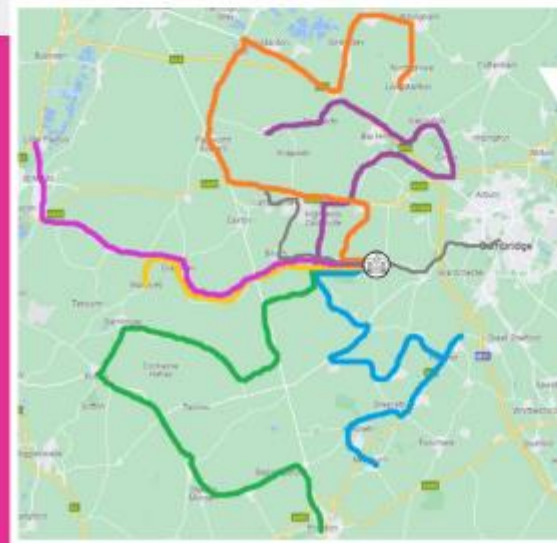
ROYSTON

Royston, Bassingbourn, Guilden Morden, Westlingworth, Polton, Gamlingay, Corydon, Arington

ST NEOTS

Little Paxton, St Neots, Eynesbury, Abbotsley, Little Gransden

In addition, the number 18 public service bus is available from Cambourne and central Cambridge to Camberton.



KEY

- BAR HILL
- GRANSDEN
- MELBOURN
- SWAVESEY
- ROYSTON
- ST NEOTS
- NO. 18 PUBLIC BUS

 CAMBERTON SIXTH FORM

NOVEMBER TOURS



www.combertonsixthform.org

Our open evening took place on Wednesday 21st June 2023.

There is still an opportunity to come and see us at Comberton Sixth Form through our 'November Tours'.

These can be booked via our website and we will circulate the information at the various CAP evenings in September/October.



Missed our Open Evening?

Don't worry, you can still book a tour.

There is also lots of information on our website.

← Scan the QR code





MORE INFORMATION

www.combertonsixthform.org

 @combertonSF



2023 — 2024

WEDNESDAY 21ST JUNE
Open Evening

DECEMBER
Application made through your school or college

TUESDAY 9TH JANUARY
Deadline for applications

FEBRUARY/MARCH
Admissions guidance meetings

EASTER
Conditional offers issued

MAY
Information pack issued to all successful applicants

JULY
Welcome event

AUGUST
Contact the college with your GCSE results
Two-day post-results surgery with the Head and Deputy
Heads of Sixth Form to resolve any problems

SEPTEMBER
Induction day followed by commencement of courses

APPLICATION PROCESS